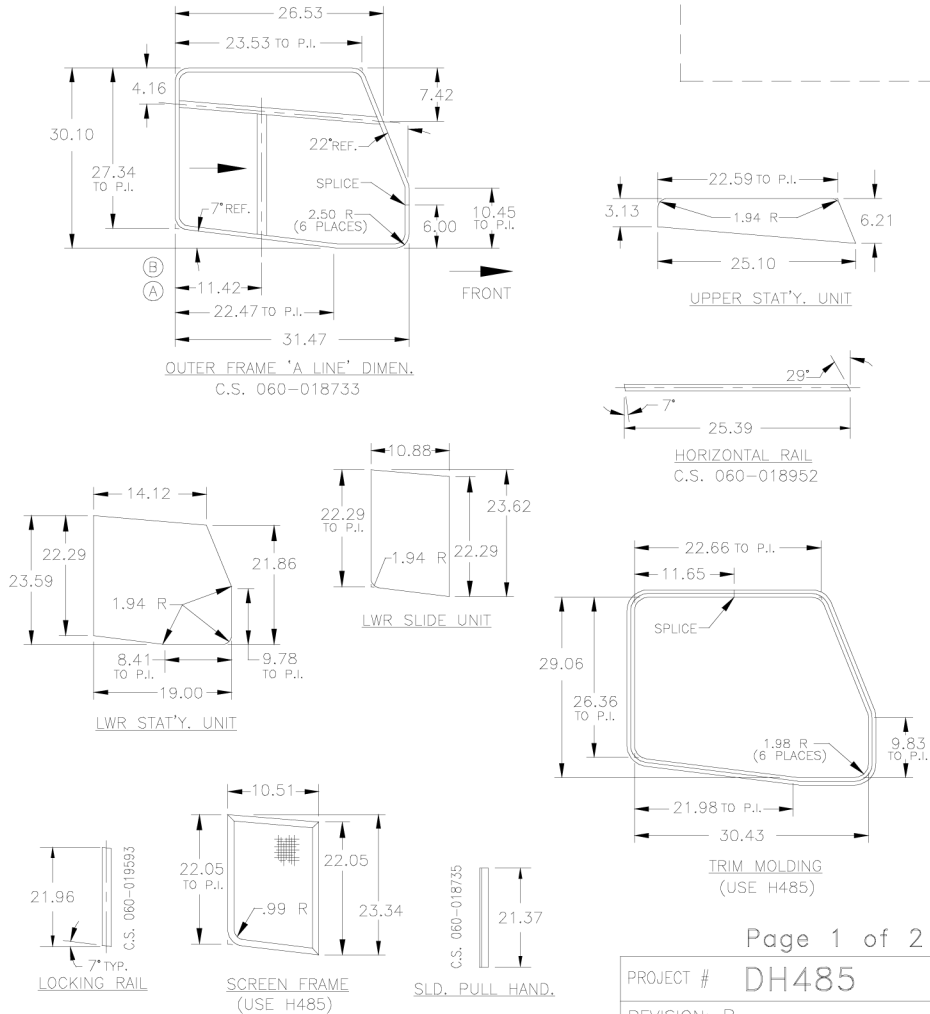


THREE PIECE SLIDE WINDOW ASSEMBLY – DUAL PANE
(NOT TO SCALE)



Page 1 of 2

PROJECT #	DH485
REVISION:	B
WINDOW FINISH:	PAINTED BLACK
DRAWING BY:	CHECKED AND APPROVED BY:
H. RENSCH	M. ASH
11-20-95	11-20-95

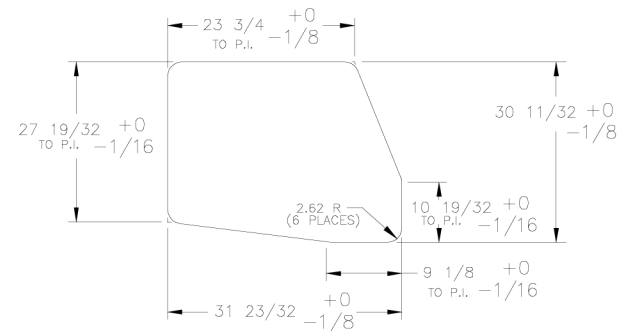
GENERAL NOTES :

- 1) DIMENSIONAL TOLERANCES FOR KEY CHARACTERISTICS ARE SHOWN ON FORM #E-03-04
- 2) THREE PIECE SLIDE WINDOW TO BE MADE L.H. ONLY; LEFT HAND INSIDE VIEW SHOWN.
- 3) SEE PAGE #2 FOR ADDITIONAL INFORMATION.

E.C. #	LETTER	DESCRIPTION OF CHANGE	CHG. BY	CK'D. BY	DATE
—	—	REDRAWN ON CAD	F. SHANK	K. GRABER	11/18/97
—	A	11.72 WAS 11.47	F. SHANK	R. OSWALD	12/02/99
(ERROR)	B	11.42 WAS 11.47	L. RIDER	F. SHANK	01/20/04

GLAZING INFORMATION

WINDOW No. LESS TRIM	LOWER SLIDE GLASS UNIT PART No.	LOWER STAT'Y. GLASS UNIT PART No.	UPPER STAT'Y. GLASS UNIT PART No.	DESCRIPTION
DH485-A2 L	390-025320 L	390-025317 L	390-025314	UPPER: 2 PCS. 1/8" TEMP'D. GLASS 62% GRAY TINT LWR: 2 PCS. 1/8" TEMP'D. GLASS AUTO TINT (OUTER) CLEAR (INNER)



SUGGESTED BODY OPENING SIZE

Page 2 of 2

PROJECT # DH485

\\DWG\WVSKTCH\DH-SK\DH485K